



Multi  
Cancer

## An Annual Multi-Cancer Screening Test

Early detection of cancer is vital for successful treatment and cure. Late detection invariably leads to intensive and toxic treatments, high treatment costs and treatment failure. EasyCheck360® is a revolutionary test, based on a simple blood draw, for early detection of 30 types of cancer to help secure you and your family's future.



**EasyCheck**360®  
Annual Cancer Check



Early detection of cancer is vital for successful treatment and cure. Late detection invariably leads to intensive and toxic treatments, high treatment costs and treatment failure. EasyCheck360® is a revolutionary test, based on a simple blood draw, for early detection of more than 30 types of cancer to help secure you and your family's future.

## Multi – Cancer

### **EasyCheck360<sup>®</sup> is Revolutionary**

EasyCheck360<sup>®</sup> is a simple blood test. EasyCheck360<sup>®</sup> is totally non-invasive, radiation free and can be availed from the comfort of your office or home.

EasyCheck360<sup>®</sup> is intended to be performed annually as a screening test, in individuals without any symptoms suggestive of cancer and aged  $\geq 30$  years.

### **EasyCheck360<sup>®</sup> can Detect More Than 30 Cancers**

EasyCheck360<sup>®</sup> can detect cancers early that originate in the Oral Cavity, Lung, Breast, Esophagus, Stomach, Liver, Pancreas, Gallbladder, Kidney, Ovary, Cervix, Prostate, Bladder and specified Sarcomas.

- Adenocarcinoma (AD): Bile Duct, Breast, Colon, Esophagus, Gallbladder, Liver, Lung, Ovary, Pancreas, Prostate, Rectum, Salivary Gland, Small Intestine, Stomach, Thyroid, Uterus
- Gastro-Intestinal Stromal Tumors (GIST): Colon, Stomach
- Hepatocellular Carcinoma (HCC): Liver
- Renal Cell Carcinoma (RCC): Kidney
- Sarcomas: Bone, Soft tissue
- Squamous Cell Carcinoma (SCC): Anorectum, Cervix, Esophagus, Head and Neck, Lung, Penis, Vagina, Vulva
- Transitional Cell Carcinoma (TCC): Bladder, Renal Pelvis, Ureter
- Urachal Carcinoma (URC): Bladder.



# The Advantage of Early Detection

## Lung Cancer

Late - Stage Survival  18%

Early - Stage Survival  90%

## Stomach Cancer

Late - Stage Survival  5%

Early - Stage Survival  69%

## Colorectal Cancer

Late - Stage Survival  14%

Early - Stage Survival  90%

## Ovarian Cancer

Late - Stage Survival  20%

Early - Stage Survival  92%

# Cancer Facts You Should Know

Cancer is a ticking time bomb globally. Every year about 18 million women and men are diagnosed with various cancers. These cancers are also associated with about 9 million deaths. This translates into roughly 34 cancer cases being detected and 18 cancer related deaths every minute. Annually, these cancers contribute to:

~4.1 million newly diagnosed cases and 1.8 million deaths in Europe (including the UK).

~2.1 million newly diagnosed cases and 550,000 deaths in the US.

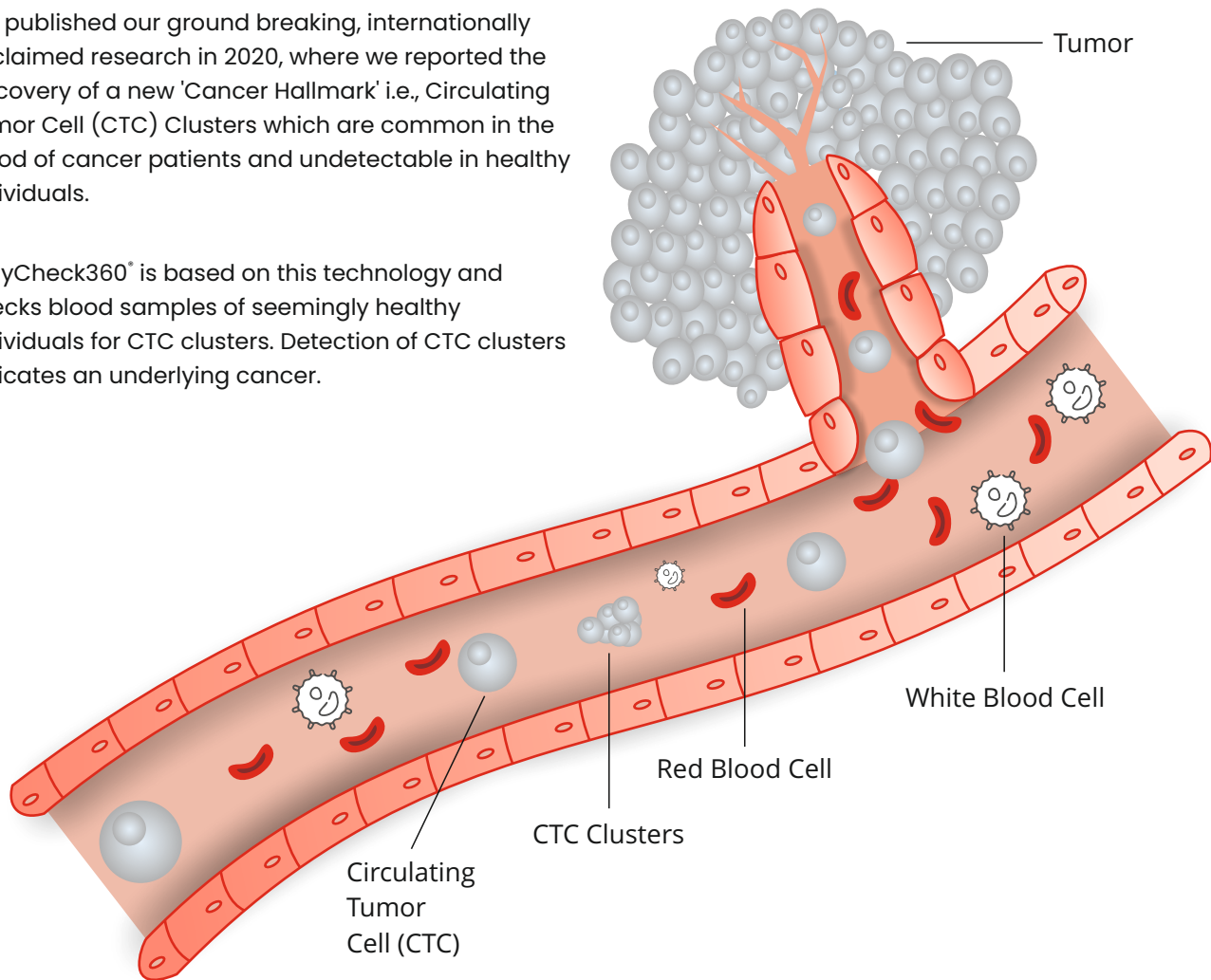
~1.2 million newly diagnosed cases and 760,000 deaths in India.

Due to changes in lifestyle as well as other risk factors, these numbers are slated to increase in the future. Detecting cancer early is vital to saving lives. Studies have shown that early detection of cancer improves survival rates.

## The Science Behind EasyCheck360<sup>®</sup>

We published our ground breaking, internationally acclaimed research in 2020, where we reported the discovery of a new 'Cancer Hallmark' i.e., Circulating Tumor Cell (CTC) Clusters which are common in the blood of cancer patients and undetectable in healthy individuals.

EasyCheck360<sup>®</sup> is based on this technology and checks blood samples of seemingly healthy individuals for CTC clusters. Detection of CTC clusters indicates an underlying cancer.



## **EasyCheck360® is Clinically Validated**

EasyCheck360® is the outcome of intensive research efforts of the last several years by internationally recognized scientists and doctors. It has been clinically validated by one of the world's largest clinical trials. The validation spans over 34,000 known cancer patients and more than 23,000 healthy individuals.

**IJC**

International Journal of Cancer

Circulating Ensembles of Tumor Associated Cells: A Redoubtable New Systemic Hallmark of Cancer.

---

**AACR**

American Association  
for Cancer Research

Hallmark Circulating Tumour Associated Cell Clusters Signify 230 Times Higher One-Year Cancer Risk

---



ACS JOURNALS

Cancer Cytopathology

Evaluation of Circulating Tumor Cell Clusters for Pan-Cancer Noninvasive Diagnostic Triaging.

## **EasyCheck360® is Accurate**

The Development of EasyCheck360® includes extensive Analytical and Clinical validation studies to establish its Accuracy and Reliability.

EasyCheck360® has been clinically proven to have accuracy of > 99% in detecting cancer early. EasyCheck360® has high accuracy to localize the tissue of origin.



## How to Order EasyCheck360<sup>®</sup>?

🌐 [easychck360.com](https://easychck360.com)

✉ [response@easychck360.com](mailto:response@easychck360.com)

## **What to Expect When You Order EasyCheck360<sup>®</sup>**

After submitting the completed Test Request Form (TRF), our representative will call you to fix an appointment for collection of blood sample by our trained technician. The final result will be communicated in 15 days from receipt of sample.

## **Make Cancer Security Your Family's Health Priority**

Most cancers can be cured if detected early. EasyCheck360<sup>®</sup> is a right step in this direction. Make EasyCheck360<sup>®</sup> a part of your annual health-check plan to de-risk yourself and your family from cancer.

## **Limitations**

EasyCheck360<sup>®</sup> is performed by sophisticated processes and equipment operated by highly skilled professionals. Yet, like every clinical procedure, EasyCheck360<sup>®</sup> has certain limitations. We encourage you to study the 'White Paper' at [easychck360.com](https://easychck360.com) to know the limitations and performance characteristics of the test in detail. In case of any questions, please contact [response@easychck360.com](mailto:response@easychck360.com).

## **Important**

We do not perform this test on pregnant women.

## **Frequently Asked Questions**

1. Does EasyCheck360® detect 'existence of cancer' or 'possibility of cancer' ?
  - ✓ EasyCheck360® detects 'existence of cancer'.
2. Does EasyCheck360® replace conventional cancer screening like mammography ?
  - ✓ EasyCheck360® is not intended to be and should not be considered as a replacement for any Standard of Care screening tests.
3. Does a 'negative' EasyCheck360® result mean that I am 'totally' cancer free at present ?
  - ✓ Within the limits of error, a 'negative' result is an indication of undetectable cancer at the time of test. For other cancers not covered by the test, no inference should be drawn from a 'negative' result.
4. Does a 'negative' EasyCheck360® result means that I am free from cancer forever ?
  - ✓ A 'negative' result means that at the time of the test there were no detectable cancer cells suggestive of cancer circulating in the blood.
5. How frequently should EasyCheck360® be repeated ?
  - ✓ As EasyCheck360® is a non-invasive blood test, there is no disadvantage in frequent testing. However, we advise that EasyCheck360® should be performed every 12 months in case of negative result.
6. If my EasyCheck360® result is 'positive', how do I find the location of the cancer ?
  - ✓ The test indicates the location for the select types of cancers with high accuracy, and in others the Tissue of Origin can be identified with reasonable accuracy. In all cases of 'positive' results, the Report should be interpreted by your physician who can guide you on further course of action.
7. Is EasyCheck360® recommended for a person suspected to have / has symptoms of cancer ?
  - ✓ No, such individuals should seek expert medical advice without delay.
8. Can EasyCheck360® be used to monitor recurrence after cancer treatment ?
  - ✓ No.

# DATAR

# CANCER GENETICS

---

UNITED KINGDOM | GERMANY | INDIA

Accreditations for Our Lab in India



Advena Ltd. Tower Business Centre, 2<sup>nd</sup> Flr.,  
Tower Street, Swatar, BKR 4013, Malta

Contact us:

✉ **India:** [response@datarpgx.com](mailto:response@datarpgx.com)

🌐 [datarpgx.com](https://www.datarpgx.com)

Proprietary Technology, All Intellectual Property Rights Protected under relevant laws.